

Track Mount

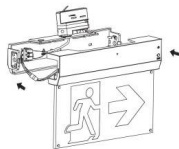
1.Remove the bracket with a flat screwdriver.



2.Connect the AC supply wires to the terminal,plug it onto the PCBA, and connect the battery.



3.Snap the luminaire onto the mounting bracket.



4.Fix the track adaptor onto track, turn clockwise or anti.



Status indication for Self-Testing

System status is indicated by a bi-colour LED and by a DALI status flag.

LED indication	Status	Commentary
Permanent green	System OK	
Fast flashing green (0.1 sec. on-0.1 sec. off)	Function test underway	
Slow flashing green (1 sec. on – 1 sec. off)	Duration test	
Red LED on	Load failure	Open circuit / Short circuit / LED failure
Slow flashing red (1 sec. on-1 sec. off)	Battery failure	Battery failed the duration test or function test/ Battery is defect / Incorrect battery voltage
Fast flashing red (0.1 sec. on-0.1 sec. off)	Charging failure	Incorrect charging current
Double pulsing green	Inhibit mode	Switching into inhibit mode via controller
Binary transmission of address via green/red LED	Address identification	During address identification mode
Green and red off	Emergency mode	Battery operation (Emergency mode)

Instructions for automatic test option

1. Instruction for Automatic test function

Once the unit is powered up, a self-diagnostics test will be automatically initiated:

- Check battery, lamp, charge board and transfer fault all the time.
- Run 3mins duration test every month.
- Run 1H or 3H duration test every year.

Note: All test functions are preset and no need field adjustment.

2. Dual Colour LED Status Indicator Meaning

- Green indicator solid on: Ready/ Normal Operation
- Red indicator flashes: Require service

•	One flash, 4s pause	Battery disconnected
••	Two flashes, 4s pause	Low battery voltage
•••	Three flashes, 4s pause	Charge board fault
••••	Four flashes, 4s pause	AC/DC transfer fault
•••••	Five flashes, 4s pause	LED lamp fault

Note: When the fault is recovered, press the test button for 2s, the red flashing indicator will turn green. The fault is cleared, and the unit is back to normal.

3. Button Test

Press test button once	run a 30s duration test
Press test button twice within 2s	run a 3mins duration test
Press test button 3 times within 2s	run a 30mins duration test
Press test button 4 times within 2s	run a 1H or 3H duration test

LED EXIT SIGN

CE IP20   



Precautions

Normal Operation: The green LED indicator stays on when connected to mains supply. The indicator will turn off when the mains supply fails, or when the internal charger malfunctions, or when the luminaire is in test mode.

Battery: LiFePO4 rechargeable battery pack. Battery should be replaced when it reaches the end of its lifetime. To avoid damage to the luminaire and ensure its performance, the battery should be replaced with same type.

Test Switch: Press the test button, LED indicator will turn off and the luminaire will be powered by the battery pack. The light source is non-replaceable. When the light source reaches the end of its lifetime, the whole luminaire shall be replaced.

Installation Procedure

WARNING

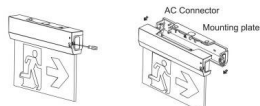
1. Switch off before installation or maintenance.
2. Switch on only after complete installation and examination of the circuit.
3. Professional electrician for installation and maintenance only.
4. This luminaire is not intended for use in high-risk task area lighting.



Read instructions and check you have all the tools and accessories to complete the installation correctly.

Surface Mount (Ceiling/ Wall/ Side mount)

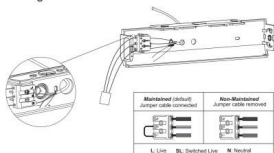
1. Dispart mounting plate.



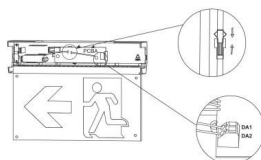
2. Wall mount or Ceiling mount



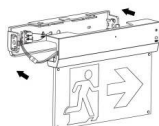
3. Connect the AC supply wire to terminal block. Refer to wiring instruction showed as below.



4. Snap the luminaire onto the mounting bracket.



5. Finish installation.



6. Fix side mounting plate on the mount surface with screws & anchor nuts. Fix the luminaire to the side mounting plate.

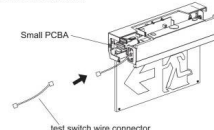


Recessed Mount

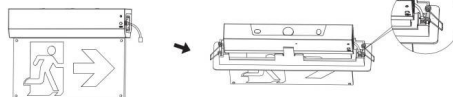
1. Remove the back plate from fixture, then remove hole plug at test switch side.



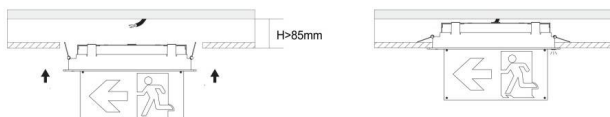
2. Connect the test switch wire connector on small PCBAs inside the luminaire.



3. Connect the plug onto the recessed kit.

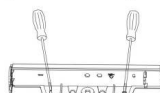


4. Cut out size: L370 x W58mm. Fix the luminaire onto the ceiling. Switch on, the green LED indicator will be on.

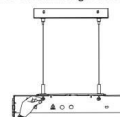


Pendant Mount

1. Knock out the screw holes and fix steel wire rope on the mounting bracket and the ceiling at both ends.



2. Adjust the rope to suitable length before fixing the screws.



3. Connect the AC supply wires to the terminal, plug



4. Snap the luminaire onto the mounting bracket.

